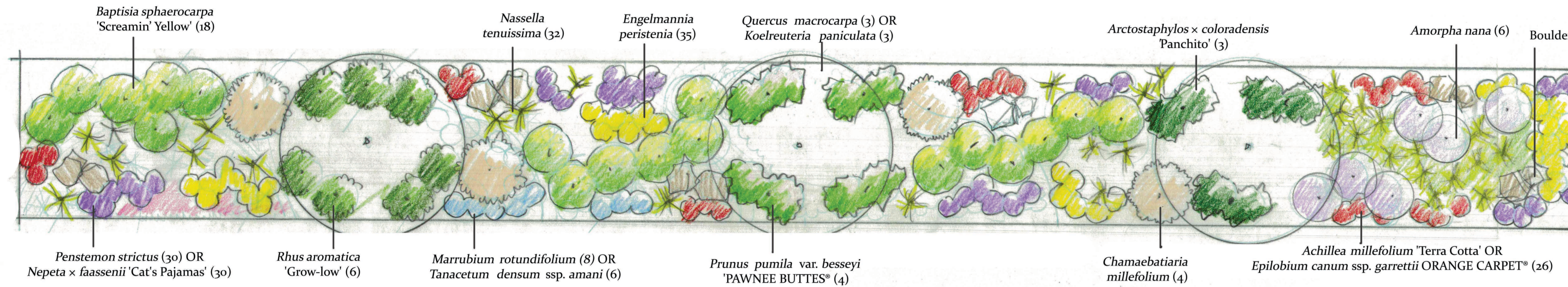
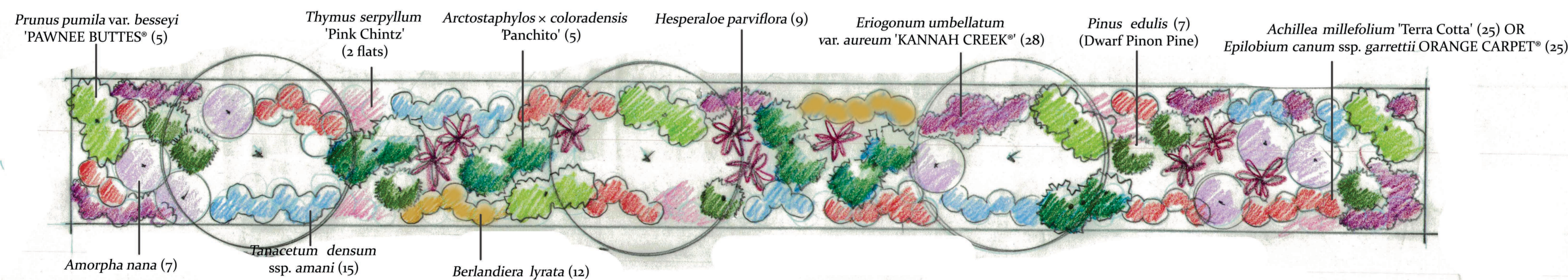


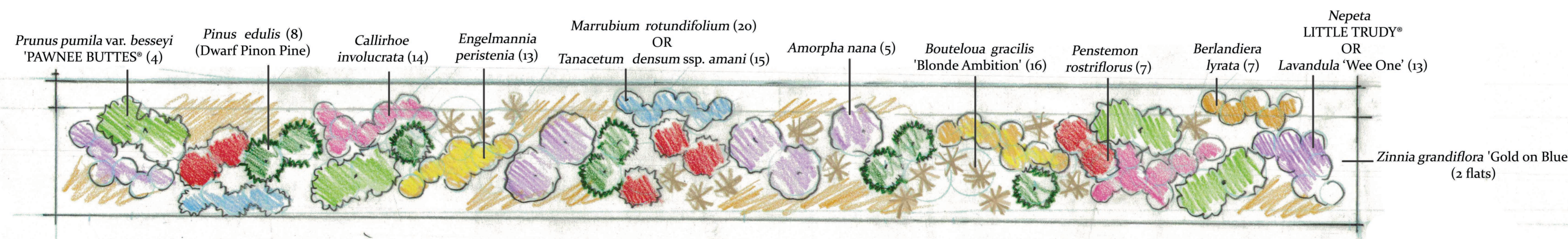
MEDIAN PLANTING DESIGN:  
NO MAINTENANCE  
100' x 8'  
Height limit 36"



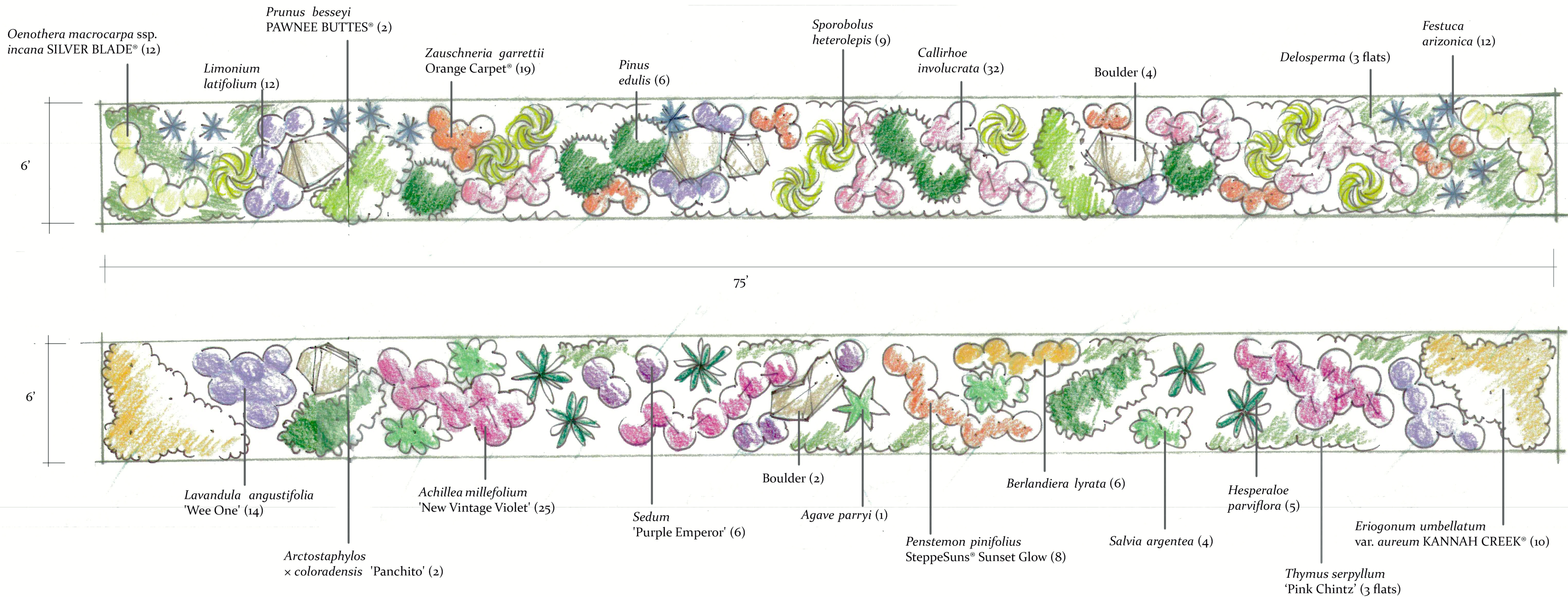
MEDIAN PLANTING DESIGN:  
LOW MAINTENANCE  
100' x 8'  
Height limit 36"



RIGHT OF WAY PLANTING DESIGN:  
NO MAINTENANCE  
75' x 6'  
Height limit 24"



RIGHT OF WAY PLANTING DESIGN:  
LOW MAINTENANCE  
75' x 6'  
Height limit 24"



Genus	species	Cultivar	Common Name	Quantity	Common Name
<i>Achillea</i>	<i>millefolium</i>	'New Vintage Violet'	New Vintage Violet Yarrow	25	New Vintage Violet Yarrow
<i>Agave</i>	<i>parryi</i>		Parry's Agave	1	Parry's Agave
<i>Arctostaphylos</i>	× <i>coloradensis</i>	'Panchito'	Panchito Manzanita	2	Panchito Manzanita
<i>Berlandiera</i>	<i>lyrata</i>		Chocolate Flower	6	Chocolate Flower
<i>Callirhoe</i>	<i>involucrata</i>		Winecups	32	Winecups
<i>Delosperma</i>		'Alan's Apricot'	Alan's Apricot Hardy Ice Plant	1	Alan's Apricot Hardy Ice Plant
<i>Delosperma</i>		GRANITA® Orange	GRANITA® Orange Ice Plant	1	GRANITA® Orange Ice Plant
<i>Delosperma</i>		GRANITA® Raspberry	GRANITA® Raspberry Ice Plant	1	GRANITA® Raspberry Ice Plant
<i>Eriogonum</i>	<i>umbellatum</i>	var. <i>aureum</i> KANNAH CREEK®	KANNAH CREEK® Sulphur Flower Buckwheat	10	KANNAH CREEK® Sulphur Flower Buckwheat
<i>Hesperaloe</i>	<i>parviflora</i>		Red Yucca	5	Red Yucca
<i>Limonium</i>	<i>latifolium</i>		Sea Lavender	12	Sea Lavender
<i>Lavandula</i>	<i>angustifolia</i>	'Wee One'	Wee One Dwarf English Lavender	12	Wee One Dwarf English Lavender
<i>Oenothera</i>	<i>macrocarpa</i>	ssp. <i>incana</i> SILVER BLADE®	SILVER BLADE® Evening Primrose	12	SILVER BLADE® Evening Primrose
<i>Festuca</i>	<i>arizonica</i>		Arizona Fescue	12	Arizona Fescue
<i>Penstemon</i>	<i>pinifolius</i>	SteppeSuns® Sunset Glow	SteppeSuns® Sunset Glow Penstemon	7	SteppeSuns® Sunset Glow Penstemon
<i>Pinus</i>	<i>edulis</i>		Dwarf Pinon Pine	6	Dwarf Pinon Pine
<i>Prunus</i>	<i>besseyi</i>	PAWNEE BUTTES®	PAWNEE BUTTES® Western Sand Cherry	2	PAWNEE BUTTES® Western Sand Cherry
<i>Sedum</i>		'Purple Emperor'	Purple Emperor Sedum	6	Purple Emperor Sedum
<i>Sporobolus</i>	<i>heterolepis</i>		Prairie Dropseed Grass	9	Prairie Dropseed Grass
<i>Salvia</i>	<i>argentea</i>		Silver Sage	4	Silver Sage
<i>Thymus</i>	<i>serpyllum</i>	'Pink Chintz'	Pink Chintz Thyme	3	Pink Chintz Thyme
<i>Zauschneria</i>	<i>garrettii</i>	Orange Carpet®	Orange Carpet® Hummingbird Trumpet	16	Orange Carpet® Hummingbird Trumpet

**Notes and helpful links:**

Soil Amendment: Incorporate squeegee with existing soil at a depth of 6" minimum.

If soil is heavy clay, optional to remove top 6" and replace with 1:1 ratio of topsoil to squeegee.

Mulch with squeegee rock at a depth of 2-3"

Groundcovers (Delosperma and Thymus) to be planted throughout entire bed along edges

Common Name	Annual Maintenance	5-10 year Maintenance
New Vintage Violet Yarrow	Cut back/shear to base every spring	Follow annual maintenance
Parry's Agave	None required	None required
Panchito Manzanita	Never touch unless there is damage to branches and only prune those branches out in spring.	Follow annual maintenance. This can be a long lived woody shrub if growing conditions are correct.
Chocolate Flower	Hand trim back dead stems in spring.	Follow annual maintenance and allow to go to seed. Thin out any undesireable seedlings.
Winecups	Cut back/shear to base every spring	No maintenance, long lived plant that is well behaved.
Alan's Apricot Hardy Ice Plant	No Maintenance, let spread.	No Maintenance, replace any holes in ground cover with new plants if desired.
GRANITA® Orange Ice Plant	No Maintenance, let spread.	No Maintenance, replace any holes in ground cover with new plants if desired.
GRANITA® Raspberry Ice Plant	No Maintenance, let spread.	No Maintenance, replace any holes in ground cover with new plants if desired.
KANNAH CREEK® Sulphur Flower Buckwheat	Cut back/shear off spent flower heads every fall. Or leave for winter interest and shear in March.	No maintenance, long lived plant that is well behaved.
Red Yucca	Trim flower stems back to base of plant every early spring.	Follow annual maintenance.
Sea Lavender	Hand trim or shear back dead stems in spring.	Follow annual maintenance. This can be a long lived perennial if growing conditions are correct.
Wee One Dwarf English Lavender	Hand trim or shear back dead stems in spring.	Follow annual maintenance. This can be a long lived perennial if growing conditions are correct.
SILVER BLADE® Evening Primrose	Hand trim back dead stems in spring.	Follow annual maintenance and allow to go to seed. Thin out any undesireable seedlings.
Arizona Fescue	Cut back every early spring.	Follow annual maintenance
SteppeSuns® Sunset Glow Penstemon	Hand trim back dead stems in spring.	Follow annual maintenance. This can be a long lived perennial.
Dwarf Pinon Pine	No maintenance. Do not shear, just let it grow. Stake to establish; remove stakes after 2 years.	No Maintenance.
PAWNEE BUTTES® Western Sand Cherry	After its mature, select a few larger branches and prune them off to about 6" above ground and let plant rejuvenate.	In the spring trim over all height back to less than 18" and allow it to rejuvenate.
Purple Emperor Sedum	Cut back every early spring.	Follow annual maintenance
Prairie Dropseed Grass	Cut back every early spring.	Follow annual maintenance
Silver Sage	Cut back every early spring.	Follow annual maintenance
Pink Chintz Thyme	Hand rake or run hand over to remove any dead foliage in spring	Trim out any dead, divide over grown areas and add plantings where desired.
Orange Carpet® Hummingbird Trumpet	No maintenance or trim a few inches each year to promote spreading the plant into a wider size.	Follow annual maintenance. This is a long lived perennial and continously spreads out from center at a resonable rate, but divide if it grows too large.